

West by poles to a Hornbeam dogwood & large Hickory
 then south to 68 poles to two dogwoods on Folks line then
 East to the Beginning. Surveyed the 11 of December 1813
 by

John Pate

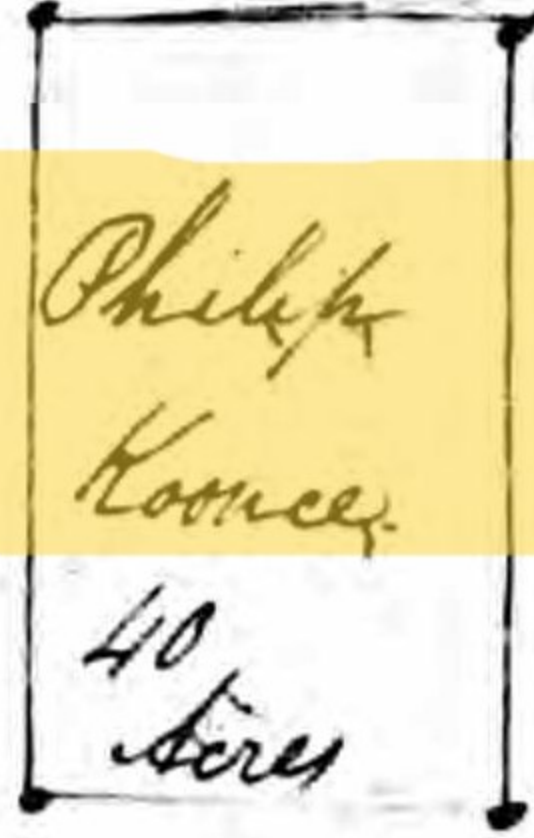
William Woods Es.

and
 Cross Allen } C.C.
 Ex^o Correcting and

Transmitted 25th May 1815 by John Pate Es^{or}

Ret^d 25th Jan^y 1814

No 3766



Scale of 80 poles per inch

State of Tennessee second district. By virtue of entry
 No 3464 dated the 9th day of October 1811 founded
 on a certificate No 639 for 160 acres issued by the
 register of West Tennessee to William Lytle the
 the 25th day of July 1811. I have surveyed for
 assignee of said William Lytle the
 acre in Lincoln county in the second district lying on the
 head waters of Stewart's Creek a south branch of Elk river, be-
 ginning at a Black oak and Chestnut, marked P.K. north
 from Willy's old road running from thence south one hundred
 and four poles to a large white oak and two dogwoods thence
 West sixty one & a half poles to a black oak thence south
 one hundred and four poles to a post oak, thence East six-
 ty one and a half poles to the Beginning. Surveyed the
 6th day of November 1813 by

James Elizer

J^r Bright Es.

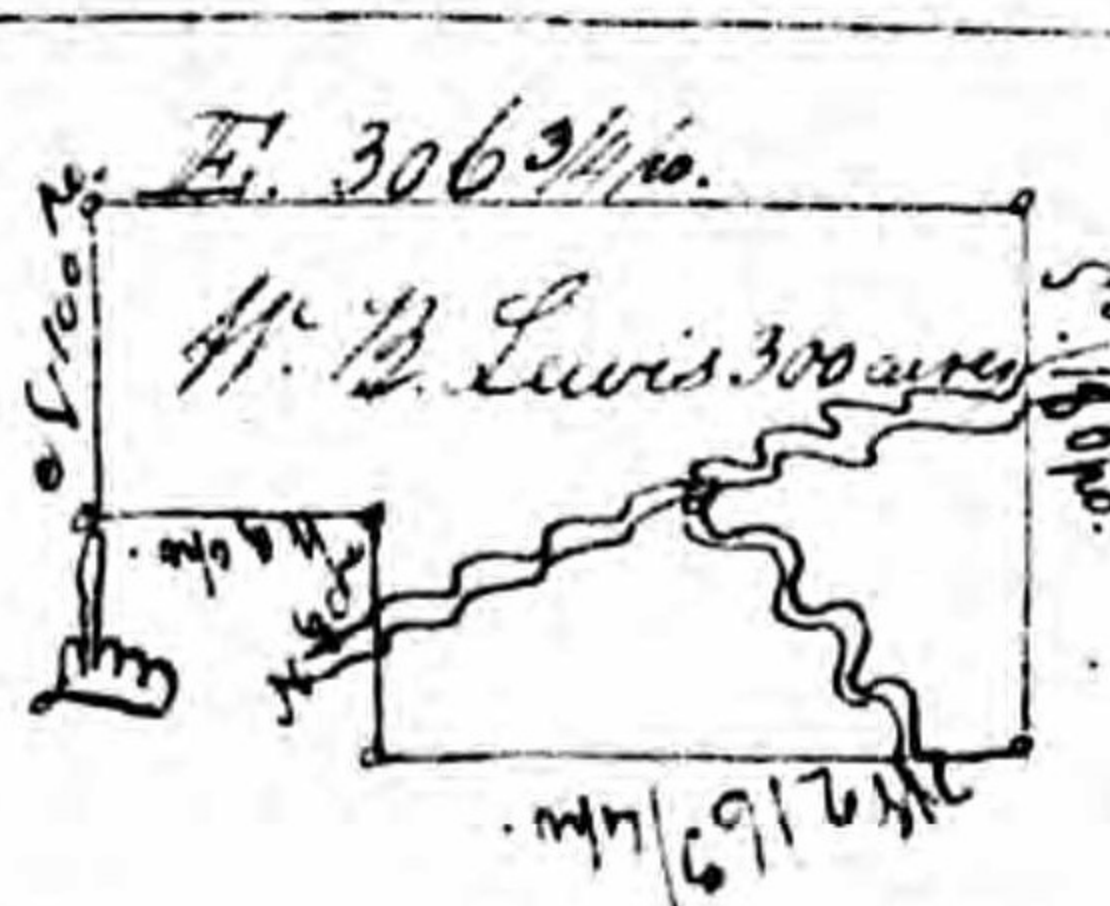
and
 James Phillip } C.C.

Ex^o Correcting and

Transmitted 18th Oct^r 1815 by Philip Koonce

Ret^d 25th Jan^y 1814

No 3702



Scale of 200 poles per inch

State of Tennessee second district. By virtue of
 entry No 4742 dated the 20th day of Novem-
 ber 1812 founded on a certificate No 1193
 for 340 acres issued to John G. Blount by the register of West
 Tennessee the 12th day of March 1811. I have surveyed for
 William B. Lewis assignee of said John G. Blount, three hundred
 acres of Land situate in Giles county in the second district
 lying on both sides of sinking creek a south branch of Clinch
 Beginning at a large Chestnut tree in the north boundary
 line of a 300 acre survey made for John Reynolds ninety