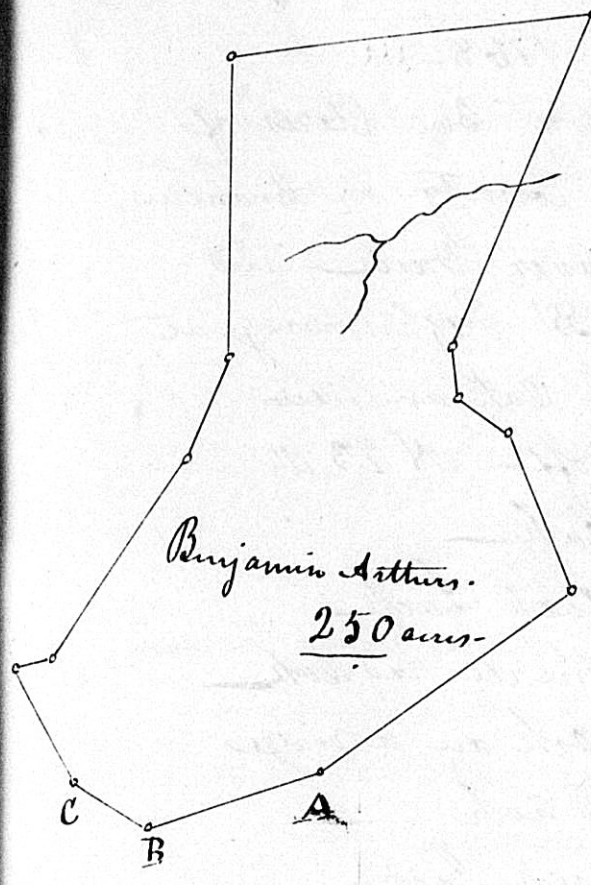
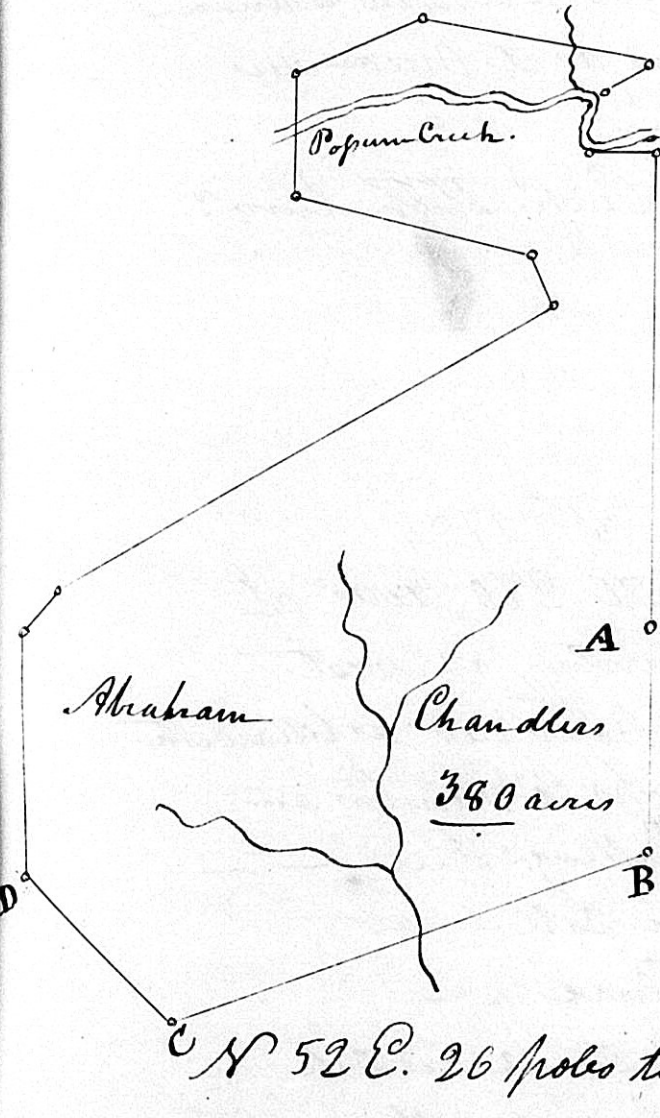


Nov. 10. 1773.



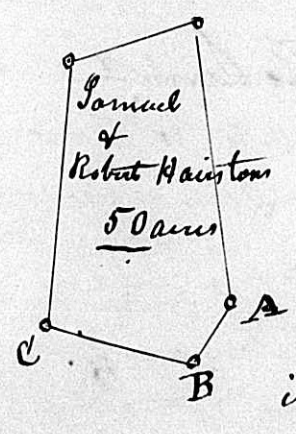
Surveyed for Benj. Arthur 250 Acres of Land situate in Redford County on East Branches of Flat Creek. and Bounded as followeth-- Beginning at Christopher Irvine Clendenings Co. Pine. Thence off. N 74 E. 70 poles to a red Oak -- S 58 E. 40 Poles to pointers. S 30 E. 56 poles to pointers on Mead & Talbots line. Thence along their lines. S 82 W. 19 poles to their Co. red Oak on the Road. S 37 W. 96 poles to their Co. white Oak. S 23 W. 44 poles to their Co. Pine -- S 2 E. 124 poles to his own Co. pointers. Thence along his own lines. S 86 W. 150 poles to John Macker's Co. red Oak on the road -- Thence along his lines. N 22 E. 150 Poles to his Co. white Oak. N 5 W. 20 poles to his Co. white oak. N 55 W. 24 poles to his Co. Pine N 22 W. 70 poles to his and Clendenings Co. white Oak -- Thence along Clendenings line. N 55 E. 126 poles to the first Station. By Richard Stith Surv. r



(Dec. 1st 1768.)
 Surveyed for Abraham Chandler 380 Acres of Land situate in Redford County on both sides of Popsum Creek. and Bounded as followeth -- Beginning at his own & James's Co. pointers. Thence along James's line. S 40 E. 66 poles to his Co. Pine. Thence off S 30 W. 208 poles to a Pine -- W. -- 90 poles to a shrub. white Oak. N 40 E. 100 Poles to pointers. N 28 poles to pointers. N 20 E. 236 poles to a red Oak -- N 62 W. 20 poles to a red Oak on the top of Coopers Mountain. S 64 W. 108 poles to a Hickory on the side of S^d Mountain. N 40 W. Crossing Popsum Creek 50 Poles to a red Oak on a Branch -- N 27 E 50 poles to a Pine. N. 60 E. 98 poles to Pointers on his own line in the lowground of a Branch -- Thence along his lines. S 15 W. 36 poles to his Co. white Oak. on Popsum Creek. down the S^d Creek. as it meanders. and Crossing to his Co. Ash -- N 52 E. 26 poles to his Co. poplar. & 40 E. 219 poles to the first Station By Richd Stith Surv. r

Dec. 3rd 1768.

Surveyed for Saml. Hairston & Robert Hairston 50 Acres of Land situate in Redford County between lines to the South East of the Long Mountain and Bounded as followeth (SS) Beginning at Thompsons Co. pointers on Campbells line. Thence along Thompsons line -- S 60 E. 28 poles to Cindyls Co. Black Oak. Thence along his lines. S 12 E. W. 62 poles to his Corner pointers. W -- 110 poles to his & Johnsons Co. Three white Oaks along Johnsons lines N 20 W. 54 poles to his and Campbells Co. white Oak and Thence along Campbells line. N 80 E 118 poles to the first Station. (By) Richard Stith Surv. r



A sign'd to W^m Glegg and }
 included in the Plot. of 300 }
 acres Sep^r 187 --